

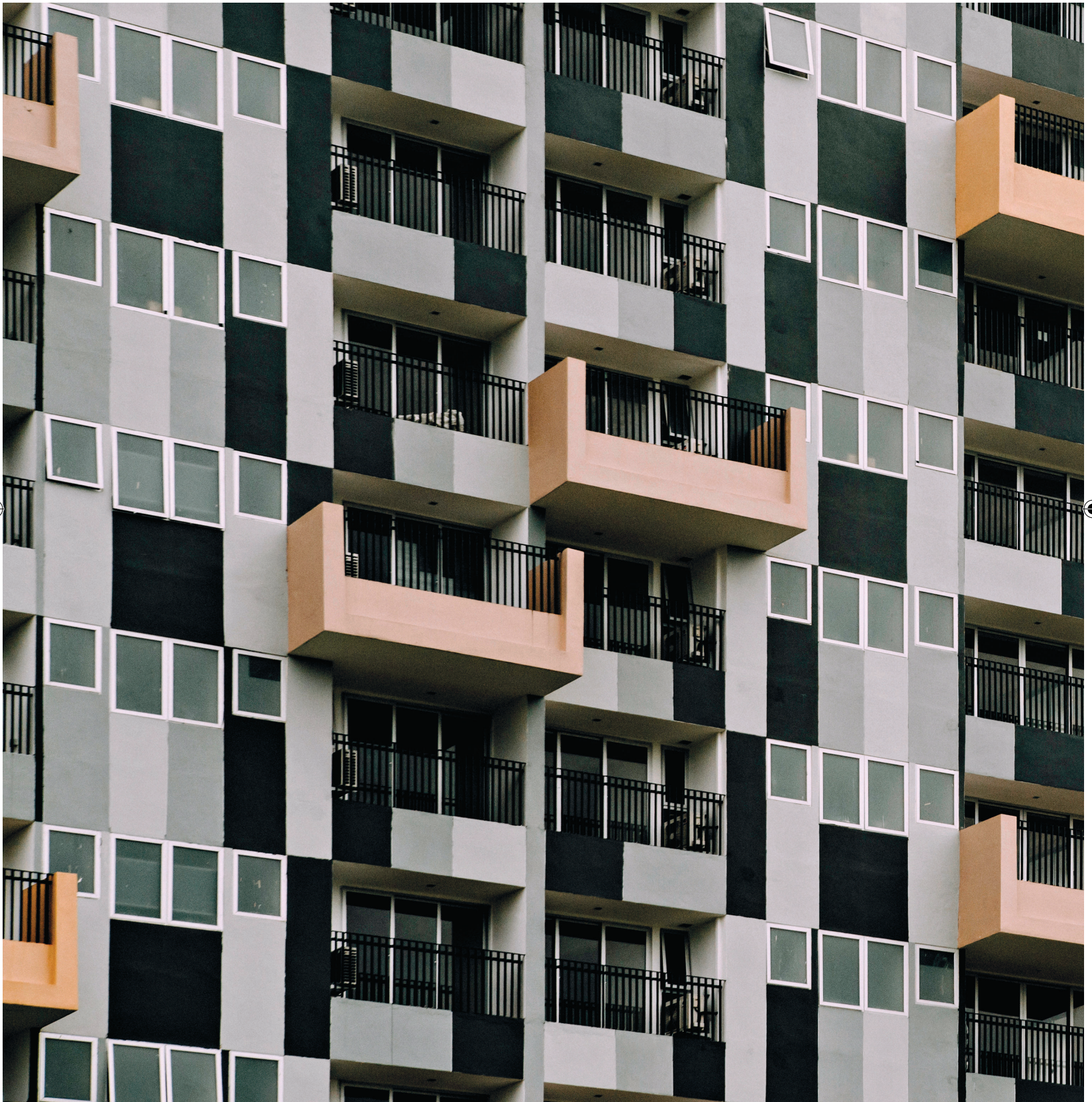


projects

Sarawak

IDC Architects Sdn Bhd

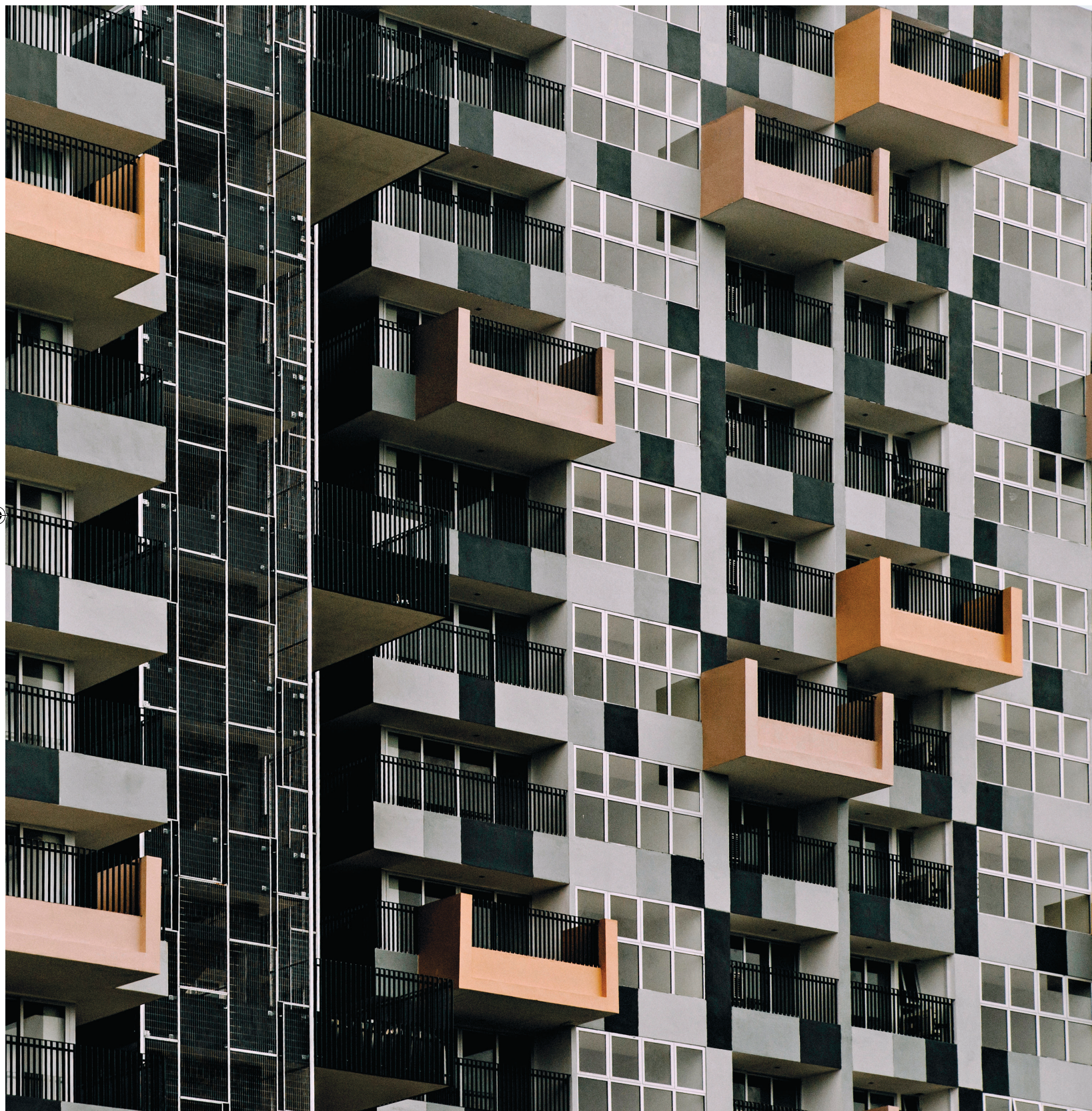
# Eden-on-the-Park Residences



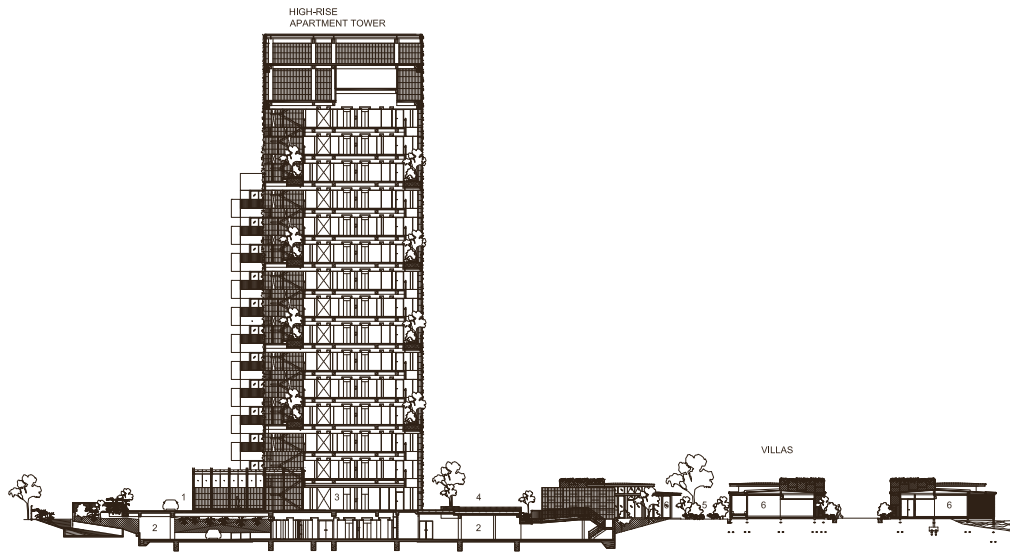




Situated in the scenic state of Sarawak, Eden-on-the-Park provides facilities that are designed to be age-friendly with amenities that encourage community living and social interaction amongst senior citizens

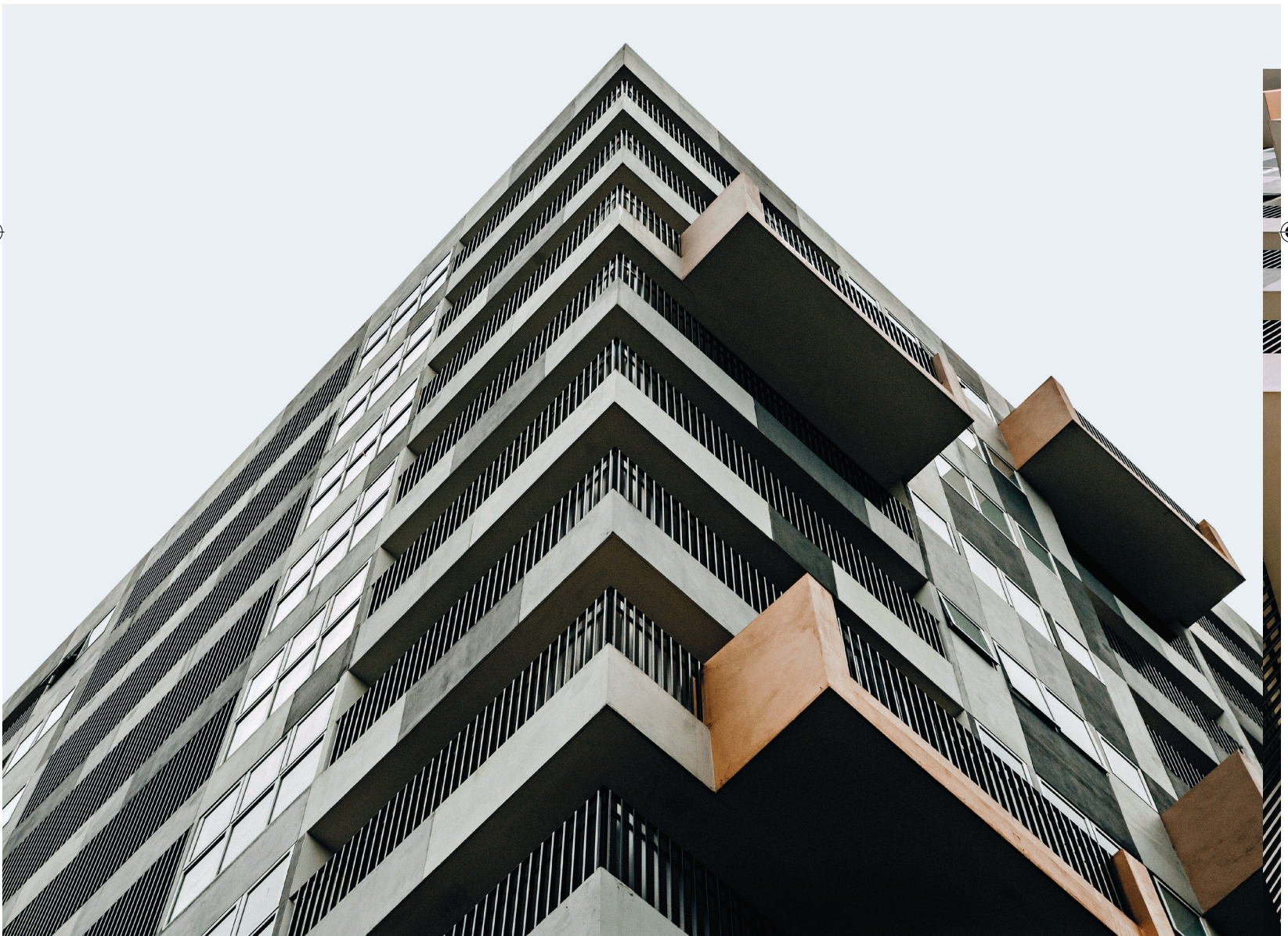






Section B-B

The 14-storey apartment tower consists of 104 senior-friendly apartment units



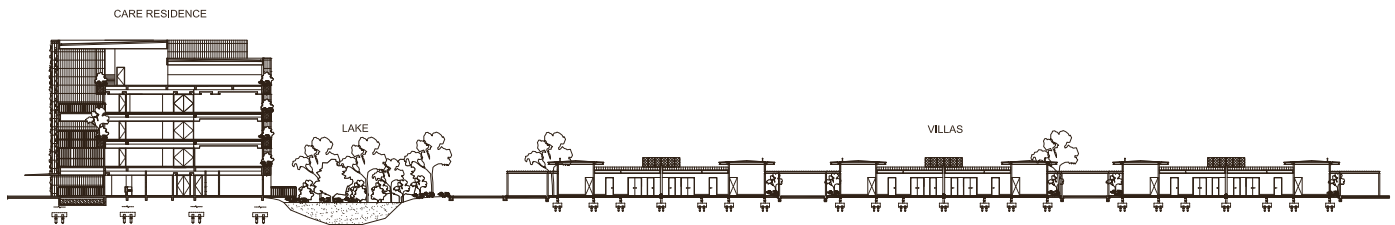




**Eden-on-the-Park Residences** at Kota Samarahan is the first Integrated Senior Lifestyle and Care Residence Resort facility in Malaysia. It is aimed at retirees who wish to live in a resort-like environment. Set amidst seven acres of parkland and a lake, the development consists of a 14-storey luxury apartment tower, single-storey villas and an upmarket nursing home.

Providing suitable accommodation and care for an ageing population is a growing issue in many countries today. Developing countries such as Malaysia are now facing a dearth of viable residential options for people over the age of 60.

Eden-on-the-Park focuses on strategies that allow seniors to decide their own living conditions for their golden years in a single locale. The facilities are designed to be age-friendly with amenities to encourage community living and social interaction for the active and healthy while also providing nursing care for those who need it in a standalone facility within the same community. 104 senior-friendly apartment units are specially designed in a 14-storey residential tower, while 14 units of single-storey villas cater to tenants who prefer living at ground level. The units are all designed as two-bedroom dual-key units, where one bedroom can



Section A-A







A 50m-lap pool overlooking the nursing and care residence facility

View from the rear entrance

An outdoor water feature







be rented out as a separate studio for additional income or in the case of downsizing. Spaces are designed with senior mobility in mind, generous circulation, minimised floor level changes, and placement of emergency call buttons in common areas such as bedrooms, living spaces and kitchens.

For the common areas, a special effort was made to create a resort-like atmosphere, with lush landscaping, a 50m-lap pool, a gym, and a café with a bar and kitchen. As seniors prefer an active social life, the care residence is designed with ample common areas for socialising and recreation. The lift lobbies and circulation

areas are laid out and managed in a way that they serve as public spaces for seniors to interact with each other. Every fourth-floor lift lobby opens out into a strategically placed landscaped sky garden with seating.

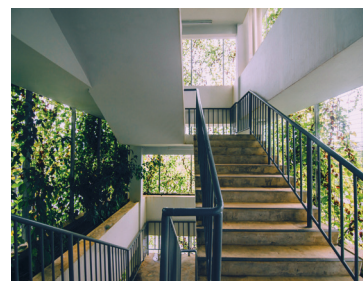
The fire escape stairs are veiled in a layer of vertical greenery, which not only further enhances the garden setting but has also created opportunities for hobbyist gardeners to cultivate fruits and vegetables as part of their physical recreation. In addition, this development, which is centred on a manmade lake and wetland park, provides additional recreational opportunities for the residents. AM

TEXT BY THE ARCHITECT

Complementing the residential tower and single-storey villas is a nursing care facility









LEFT PAGE TOP The nursing care facility, set amidst a lake LEFT PAGE BOTTOM, CLOCKWISE FROM LEFT Senior Lifestyle Villas / Balconies are designed with senior mobility in mind / Aerial of the single-storey villas / Fire escape stairs veiled in a layer of vertical greenary



Client  
**Eden-on-the-Park  
Sdn Bhd**

Location  
**Kota Samarahan,  
Sarawak**

Principal Use  
**Retirement village  
and resort/  
Healthcare**

Architect  
**IDC Architects  
Sdn Bhd**

Project Principal  
**Alan Lau**

Project Team  
**Amily Voon,  
Emmeline Ong,  
Ryohei Akao,  
Simon Ling,  
Mary Nicholas,  
Marini Abdullah**

Date of Completion  
**21 February 2017**

Site Area  
**28,992.76 sqm**

Floor Area  
**32,750 sqm**

Project Cost  
**Unknown**

Contractor  
**Sarawak  
Construction Sdn Bhd**

Civil Engineer  
**Jurutera Jasa (S)  
Sdn Bhd**

M&E Engineer  
**PKM Projek  
Konsultant  
Malaysia Sdn Bhd**

Quantity Surveyor  
**PUBM Quantity  
Surveyors Sdn Bhd**

Lighting  
**Just Light Enterprise  
Sdn Bhd**

Landscape  
**Plantscape Resources  
Sdn Bhd**

Other Building  
Consultants  
**Optimum Healthcare  
Asia Pacific Sdn Bhd**

Materials  
**Concrete, masonry,  
steel, glass**